

STH-MD1/-C Stereo Head

User's Manual

? 2001 Videre Design

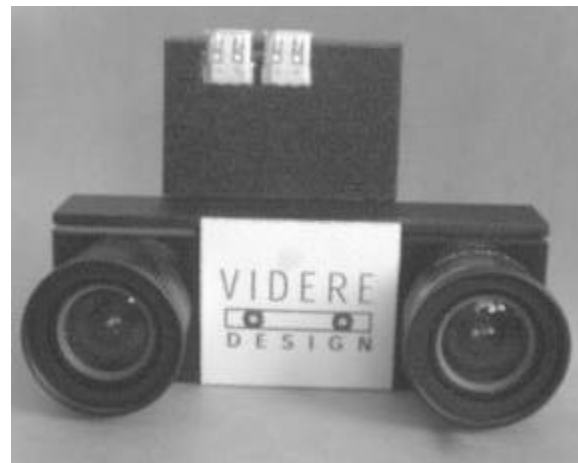


Table of Contents

1	Introduction.....	3
2	Quick Start.....	4
3	Hardware Overview.....	6
3.1	Hardware Schematic.....	6
3.2	Frame Rates.....	6
4	Lenses.....	8
4.1	Changing Lenses.....	8
4.2	Cleaning the Imagers.....	8
4.3	Imager Size.....	8
4.4	F Number.....	8
4.5	Focal Length.....	8
4.6	Range Resolution.....	9
4.7	Field of View.....	9
5	1394 Interface.....	10
5.1	1394 Cable.....	10
5.2	1394 Host Interface.....	10
6	User Controls.....	11
6.1	Color.....	11
6.2	Gamma Correction.....	11
6.3	Video Digitization Parameters.....	12
6.4	Subsampling.....	12
6.5	Subwindowing.....	13
6.6	Electronic Pan and Tilt.....	13
6.7	Electronic Vergence.....	13
6.8	Frame Rates.....	14
7	Installing the 1394 Host Card and Capture Software.....	15
7.1	1394 Hardware and Drivers.....	15
7.1.1	MS Windows Hardware Installation.....	15
7.1.2	Linux Hardware and Driver Installation.....	15
7.2	STH-MD1 Software.....	15
8	Interface Software API.....	17
9	Mounting Diagrams.....	18
9.1	Bottom Mounting Diagram for the STH-MD1/-C.....	18
9.2	Bottom Mounting Diagram for the STH-MD1/-C-Wide (Rev B).....	18
10	Technical Specifications.....	19
10.1	Geometry.....	19
10.2	Interface.....	19
10.3	Imagers.....	19
10.4	Full-frame rates.....	19
10.5	Physical.....	20
11	Technical Support.....	21

1 Introduction

The STH-MD1 is a compact, low-power digital stereo head with an IEEE 1394 digital interface. It consists of two 1.3 megapixel, progressive scan CMOS imagers mounted in a rigid body, and a 1394 peripheral interface module, joined in an integral unit.

The CMOS imagers are from PixelCam (now a part of Zoran Corporation). They have 1288 H by 1032 V pixels, and come in either monochrome (STH-MD1) or colorized (STH-MD1-C) versions. These imagers have excellent dynamic range, sensitivity, anti-blooming, and noise characteristics. They are fully controllable via the 1394 interface: the user can set exposure, gain, subwindow, decimation, etc. They can be used interchangeably with the same interface module.

The STH-MD1/-C uses standard C-mount lenses for user-changeable optics. Wide-angle to telephoto options are available, depending on the application.

The wide baseline version of the STH-MD1/-C has exactly the same characteristics as the STH-MD1/-C, with the exception of range resolution and mounting diagrams.

There are software drivers for the STH-MD1/-C for MS Windows 98/2000/XP, and for Linux 2.4.x kernels.

SRI's Small Vision System (SVS) software has an interface to the STH-MD1/-C. You can simply and automatically calibrate the stereo head, perform stereo correlation, and view the results as a 3D set. The SVS software includes all of the capture software described in this document.

2 Quick Start

The STH-MD1/-C comes assembled, the interface module mounted to the imager module. The module comes without mounted lenses.

To set up and test the STH-MD1/-C, you will need the following:

1. Pair of C-mount lenses, for 2/3" or larger imager.
2. Host computer with a 1394 PCI or PCMCIA card, OHCI compliant.
3. 1394 6-pin cable.
4. Capture software or Small Vision System installed on the host computer.

Install the 1394 host card, if necessary, according to the directions in Section 7.1. Install the video capture software (included with the STH-MD1/-C) or Small Vision System software (see Section 7.2). This is the not-so-quick part of the Quick Start.

Screw the lenses into the mounting holes on the stereo head. Be careful not to force them initially, as you can cross-thread the lens mount. Snug them down, but do not tighten excessively.

Plug one end of the 1394 6-pin video cable into either 1394 jack on the STH-MD1/-C, and the other into a 1394 port on the host PC. Note: for PCMCIA cards, and laptops with a 4-pin Sony iLink port, an external power supply and adapter are necessary to convert to a 6-pin (signal + power) 1394 plug. Most PCMCIA cards come with this adapter.

Start the video capture program, `smallv(.exe)` or `smallvcap(.exe)`, on the host computer. You should see a screen as in Figure 2-1. The message window should indicate that the STH-MD1 interface is present. If not, go back to software installation (Section 7.2), and follow the instructions for configuring the correct capture library.

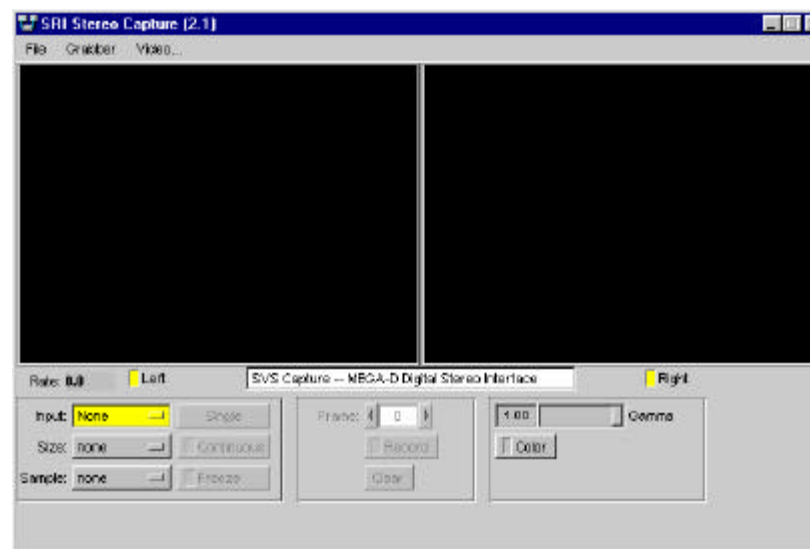


Figure 2-1 Video capture program window.

Pull down the Input chooser, and select the Video option. If everything has been set up, the driver software will recognize and configure the stereo head after a few seconds, and a success message will appear in the info text window. If not, the Input chooser will go back to None, and an error message will appear in the info window. Please see Section 7 for troubleshooting.

To view stereo video, press the Continuous button. Left and right images should appear in the application windows. If the message “Image timed out” appears, then there is a problem with the IEEE 1394 drivers; please see Section 7. If the images are too light or too dark, you can open the manual iris of the cameras, or change the exposure and gain settings (Section 6.3). Images can be saved using the File menu.

A more complete description of the video capture program is in Section 6. The SVS programs are described in the documentation that comes with

that software. It is helpful to review Section 6 in conjunction with the SVS documentation.

3 Hardware Overview

Figure 3-1 shows the hardware configuration of the STH-MD1/-C.

The imager module has a milled Delrin frame that rigidly holds two megapixel imagers, separated by a fixed distance of 9 cm. Lens mounts are an integral part of the frame, and standard C-mount lenses are screwed into these holders. There is an IR cutoff filter, with a knee at approximately 700 nm, permanently mounted inside the lens holder. See Section 4 for appropriate lens characteristics.

The interface module is mounted on the back of the stereo head. Two 1394 ports are placed at the top of the module. Either port can be used as a connection to the host PC. The two ports allow daisy-chaining of the 1394 cable to other devices. **Use only one port to connect the STH-MD1/-C to the host computer!**

A status LED indicates video imager activity. It will flash at half the frame rate. It should begin flashing as soon as power is supplied to the camera through the IEEE 1394 cable, since the imagers are always active, even when images are not being acquired by the host computer. Changing the

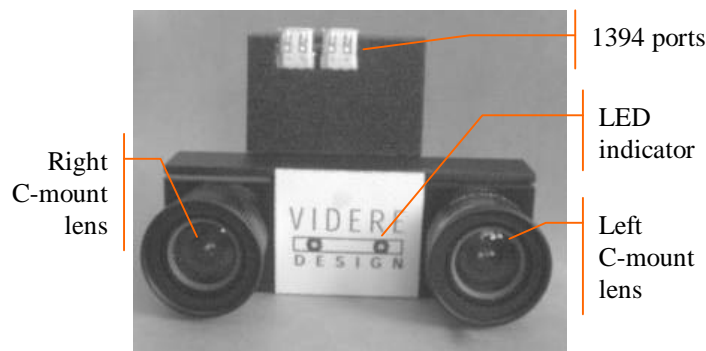


Figure 3-1. Physical layout of the STH-MD1/-C stereo head.

video modes (frame size, decimation) will cause the frame rate to change, and this will be reflected in the LED flash rate.

There are no user-settable switches on the STH-MD1/-C.

3.1 Hardware Schematic

Figure 3-2 shows the design of the internal hardware of the STH-MD1/-C. In the stereo imager module, two CMOS imagers, each of size 1288 x 1032 pixels, digitize incoming light into a digital stream. The imagers operate in progressive mode only, that is, each line is output in succession from the full frame.

The maximum video rate is 12 megapixels per second from each imager. The imagers are synchronized to a common clock, so that the corresponding pixels from each imager are output at precisely the same time. Special interlace electronics convert the individual streams into a single pixel-interlaced stream at 24 MHz. The interlaced stream contains one byte from the left imager, then the corresponding byte from the right imager, then the next byte from the right imager, and so on.

The interlaced video stream is transferred to the 1394 interface module, which communicates to the host PC over a 1394 digital cable. The module also accepts commands from the host PC over the cable, and uses these commands to control imaging modes such as exposure or subwindowing.

The 1394 interface module can communicate at the maximum 1394 data rate, 400 MBps.

3.2 Frame Rates

The 1394 interface electronics supports a maximum rate of 24 megapixels per second. At this rate, there is no need for large buffer memories to hold video data on the stereo device. At maximum frame size, the frame rate is 7.5 frames per second. Subsampling modes support higher frame rates, from 26 fps at 640 x 480 to 110 fps at 320 x 240 (Section 6.8).

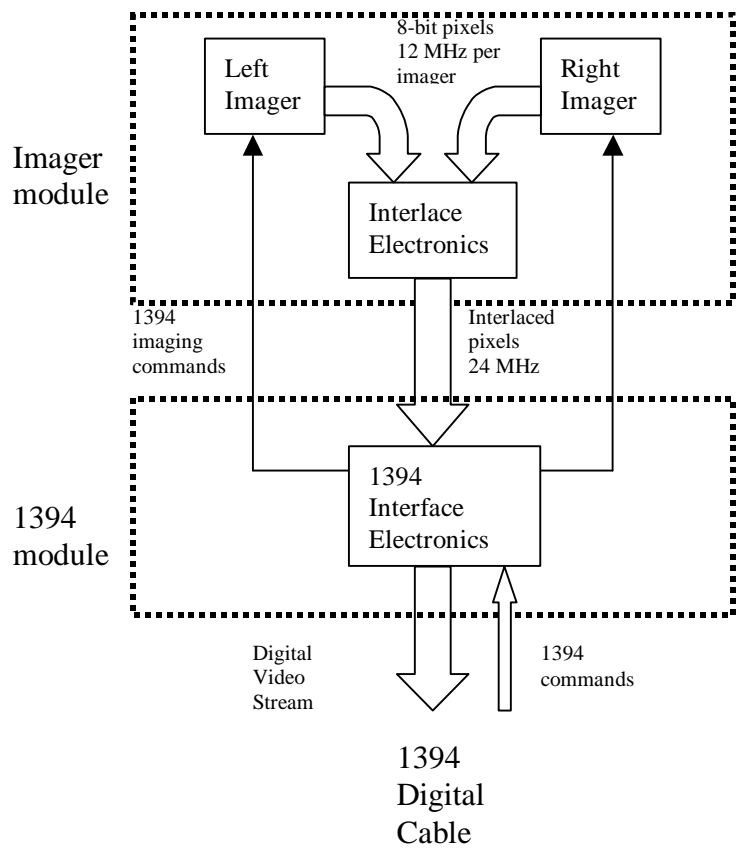


Figure 3-2 Schematic of the STH-MD1/-C electronics.

4 Lenses

The STH-MD1/-C uses standard C-mount lenses. Good-quality, fixed-focus lenses with low distortion and high light-gathering capability are best.

Lenses are characterized optically by imager size, F number, and focal length. Following subsections discuss the choice of these values.

4.1 Changing Lenses

Standard C-mount lenses have a 1" diameter, 28 threads-per-inch screw on their back end. The screw mates with the lens holder opening. To insert a lens, place it back end on the lens holder opening as straight as possible, and gently turn it clockwise (looking down at the lens) until it engages the threads of the lens holder. If you encounter a lot of resistance, you may be cross-threading the lens. Forcing it on will damage the plastic lens holder threads.

Once the threads are engaged, continue screwing it on until it seats firmly. You can snug it down, but do not tighten it excessively, since this can damage the lens and the lens holder threads.

Removing the lens is the reverse process: unscrew the lens counter-clockwise. There will be some initial resistance, and then it should unscrew smoothly.

Normal care should be used in taking care of the lenses, as with lenses for any good-quality camera.

4.2 Cleaning the Imagers

It should not be necessary to clean the imagers, since they are sealed off by an IR filter inside the lens mount.

If dirt and dust are present on the IR filter surface, they can be cleaned in the same manner as a lens. Wet a non-abrasive optic cleaning tissue with a

small amount of methyl alcohol or similar lens-cleaning solvent, and wipe the imager glass surface gently. Dry with a similar tissue.

4.3 Imager Size

The *imager size* is the largest size of imager that can be covered by the lens. For the STH-MD1, the lens must be 2/3" or 1". 2/3" is an acceptable size, but there will be a little vignetting (darkening) at the edge of the image. A 1" lens will give much better illumination, but is typically available only in longer focal lengths (12 mm or greater).

4.4 F Number

The *F number* is a measure of the light-gathering ability of a lens. The lower the F number, the better it is at pulling in light, and the better the STH-MD1 will see in low-illumination settings. For indoor work, an F number of 1.8 is acceptable, and 1.4 is even better. For outdoors, higher F numbers are fine. In any case, it is useful to have a manual iris for high light situations. While the imagers can have electronic exposure and gain control to automatically compensate for different light conditions, the acceptable illumination range can be extended by mechanical adjustment of the lens opening.

4.5 Focal Length

The *focal length* is the distance from the lens virtual viewpoint to the imager. It defines how large an angle the imager views through the lens. The focal length is a primary determinant of the performance of a stereo system. It affects two important aspects of the stereo system: how wide a field of view the system can see, and how good the range resolution of the stereo is. Unfortunately there's a tradeoff here. A wide-angle lens (short focal length) gives a great field of view, but causes a drop in range resolution. A telephoto lens (long focal length) can only see a small field of view, but gives better range resolution. So the choice of lens focal length usually involves a compromise. In typical situations, one usually

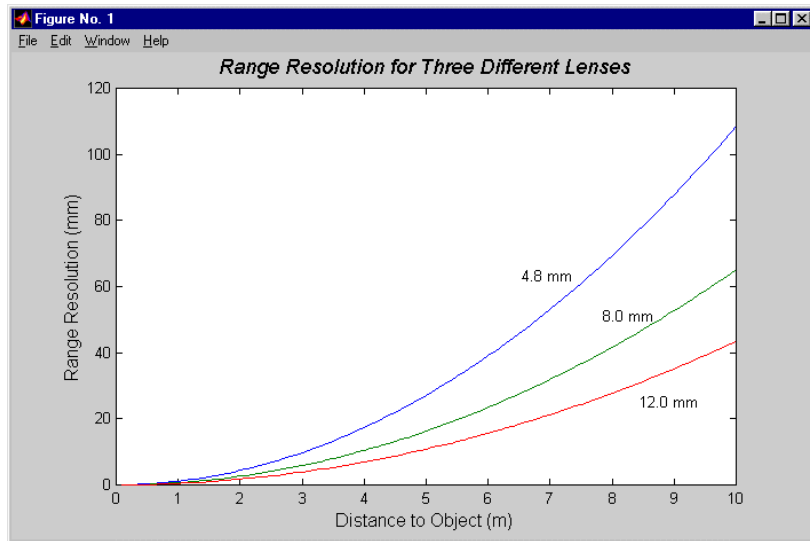


Figure 4-1 Range resolution in mm as a function of distance, for several different lens focal lengths.

chooses the focal length based on the narrowest field of view acceptable for an application, and then takes whatever range resolution comes with it.

4.6 Range Resolution

Range resolution is the minimum distance the stereo system can distinguish. Since stereo is a triangulation operation, the range resolution gets worse with increasing distance from the stereo head. The relationship is:

$$\Delta r \approx \frac{r^2}{bf} \Delta d,$$

where b is the baseline between the imagers, f is the focal length of the lens, and Δd is the smallest disparity the stereo system can detect. For the

STH-MD1-C, b is 90 mm, and Δd is 0.46875 μ m (pixel size of 7.5 μ m, divided by the interpolation factor of 16).

Figure 4-1 plots this relationship for several focal lengths. At any distance, the range resolution is inversely proportional to the focal length.

4.7 Field of View

The field of view is completely determined by the focal length. The formulas for the FOV in horizontal and vertical directions are:

$$HFOV \approx 2 \arctan(4.8 / f)$$

$$VFOV \approx 2 \arctan(3.8 / f)$$

where f is in millimeters. For example, a 4.8 mm lens yields a horizontal FOV of 90 degrees. This is about the smallest practical focal length for the STH-MD1.

The following table shows the FOV for some standard focal lengths.

Lens focal length	Horizontal FOV	Vertical FOV
4.8 mm	90 deg	73 deg
8.5	57	44
12.5	50	38
16	22	17

Table 4-1 Horizontal and vertical field of view for different lens focal lengths.

5 1394 Interface

Digital image information is transferred from the STH-MD1/-C to the host PC via a 1394 cable. The cable sends a video stream from the imagers to the PC, and sends commands from the PC to the stereo head to control exposure, subsampling, etc. The cable also supplies power to the stereo head.

5.1 1394 Cable

The STH-MD1/-C must be connected to the host PC via a 6-pin male-male IEEE 1394 cable. The maximum length for such a cable is 4.5 m (about 15 feet). The cable supplies both signals and power to the stereo head. **Use only one cable!** The two ports on the MEGA-D are for daisy-chaining additional devices onto the IEEE 1394 bus.

The distance between the stereo head and the PC can be extended by using a 1394 repeater.

Several 1394-enabled devices can be connected together, as long as the connection topology doesn't have any loops. The STH-MD1/-C can be connected at any point in such a topology. At a maximum, it will need about 60% of the bandwidth of a 400 MBps connection.

5.2 1394 Host Interface

The host computer must have an available 1394 port. Some portables and desktops come with built-in ports. If these are 6-pin ports, they can be connected directly to the STH-MD1/-C. Sony laptops also support an alternative 4-pin 1394 cabling, which has the signal pins but no power. There are adapters that convert from 4-pin to 6-pin styles; these adapters use an external power supply transformer.

If the host PC doesn't have a built-in 1394 port, one can be added by installing a 1394 PCI card or PCMCIA card for laptops. 1394 PCI cards have 6-pin ports, and supply power. PCMCIA cards do not have the

capability of supplying power, and come with an adapter for supplying power to the 1394 cable through a wall transformer.

Any 1394 card is suitable, as long as it conforms to OHCI (open host controller interface) specifications. All current cards do, but some older cards may not.

6 User Controls

The CMOS imagers are fully controllable via the 1394 interface. User programs may input color images (STH-MD1-C only), set video digitization parameters (exposure, gain, red and blue balance), subsampling modes, and region-of-interest (subwindowing). All of these parameters can be set with the included capture application, or with the SRI Small Vision System. They are also accessible to user programs through the capture API (Section 8).

User controls for frame size and sampling modes are on the main capture window dialog. Video digitization and Subwindowing controls are accessed through a dialog invoked with the *Video...* menu item. Figure 6-1 shows the dialog.

6.1 Color

Color information from the MEGA-D digital head (STH-MD1-C only) is input as raw colorized pixels, and converted by the interface library into

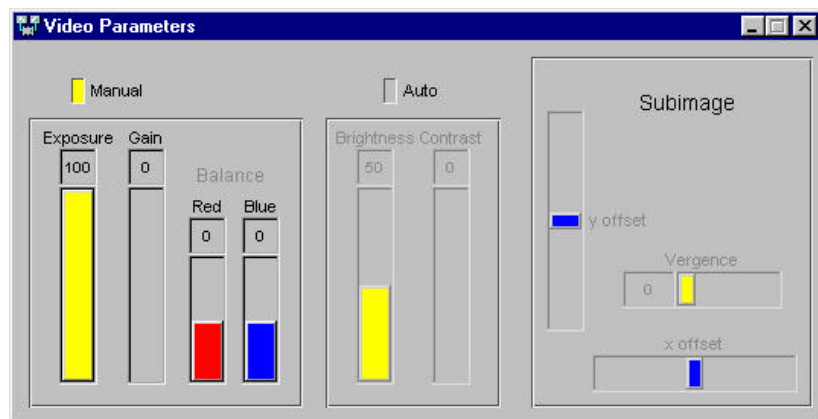


Figure 6-1 Video Parameters dialog.

two monochrome and one RGB color channel. The color channel corresponds to the left image, which is the reference image for stereo. The color image can be de-warped, just like the monochrome image, to take into account lens distortion (see the Small Vision System User's Manual).

Color information from the camera is input only if the *Color* button is pressed on the main window (Figure 2-1).

Because the typical color camera uses a colorizing filter on top of its pixels, the color information is sampled at a lower resolution than a similar non-colorized camera samples monochrome information. In general, a color camera has about 1/4 the spatial resolution of a similar monochrome camera. To compensate for the reduced resolution, use binning (Section 6.4) to increase the fidelity of the image. For example, if you need a 320x240 frame size, use 640x480 and binning x2.

The relative amounts of the three colors, red/green/blue, affects the appearance of the color image. Many color CCD imagers have attached processors that automatically balance the offsets among these colors, to produce an image that is overall neutral (called *white balance*). The MEGA-D provides manual color balance by allowing variable gain on the red and blue pixels, relative to the green pixels. Manual balance is useful in many machine vision applications, because automatic white balance continuously changes the relative amount of color in the image.

The manual gain on red and blue pixels is adjusted using the *Red* and *Blue* controls on the *Video Parameters* dialog. For a particular lighting source, try adjusting the gains until a white area in the scene looks white, without any color bias.

6.2 Gamma Correction

To display properly for human viewing, most video images are formatted to have a nonlinear relationship between the intensity of light at a pixel and the value of the video signal. The nonlinear function compensates for loss of definition in low light areas. Typically the function is x^γ , where γ is 0.45, and the signal is called "gamma corrected." Digital cameras, such as the STH-MD1/C, do not necessarily have gamma correction. This is not a

problem for stereo processing, but does cause the display to look very dark in low-light areas. You can add gamma correction to the displayed image by choosing an appropriate gamma value in the slider under the right display window (Figure 6-2).

6.3 Video Digitization Parameters

The CMOS imagers have electronic exposure and gain controls to compensate for varying lighting conditions. The exposure can vary from a maximum of a full frame time to a minimum of one line time. Gain is an additional amplification of the video signal, for low-light situations. It is settable from 0 to 18 dB.

Both imagers are treated in exactly the same manner. It is not possible to set a different exposure or gain on each imager.

Digitization control can operate in either manual or automatic mode. Refer to Figure 6-1 for the controls in the video capture program. Manual mode is the only currently supported mode for the STH-MD1/C.

In manual mode, the user program sets the exposure and gain. The exposure and gain are based on a 0 to 100 scale. Here are some tips for setting exposure and gain.

- ?? In general, keep the gain as low as possible, since it introduces additional noise into the system. Use it only if the exposure is set to maximum, or if the exposure must be kept low to minimize motion blur.
- ?? Adjust the manual iris of the lens to as small an opening as possible for your application, without having to use gain. This will increase the depth of field and give better optical performance.

6.4 Subsampling

In many applications it is not necessary to work with the the full 1288 x 1032 pixel array. The CMOS imagers are capable of sampling the pixels in the array. Sampling allows the video stream to send less data, for faster frame rates or less bus activity. A sampled image shows the same scene as the original image, but it uses fewer pixels to do so, and has less detail. Sampling differs from *subwindowing*, which picks a rectangular portion of the image, but doesn't change its resolution.

The PC capture interface supports two types of subsampling. *Decimation* is a sampling technique in which only a portion of the pixel values are sent back to the host PC. Decimation takes place at the CMOS imagers, so frame rates can be much higher. The STH-MD1/-C supports decimation by 2 and by 4.

Binning is a subsampling technique in which several adjacent pixels are averaged into one. Binning is superior to subsampling in that it reduces video noise, sometimes quite substantially. However, binning does not cut down on the video stream data rate for the STH-MD1/-C, since the binning is done on the host PC.

Subsampling is always done in both the vertical and horizontal direction. Subsampling x2 means that an image of size H x V will be transformed into an image of size H/2 x V/2. Subsampling x4 transforms it to an image of size H/4 x V/4.

Figure 6-2 shows the frame size and subsampling controls on the video capture application. Any x2 or x4 subsampling is allowed, including combined binning and decimation.

6.5 Subwindowing

Often the area of interest in an image will be a small portion of the whole image. In this case, there is no need to send all of the image data. The CMOS imagers support *subwindowing*, where only the pixels from a rectangular subwindow of the image are sent back. The imagers support independent subwindowing in vertical and horizontal directions. The only constraint is that the number of pixels in a line, or the number of lines in a subwindow, must be a multiple of 8.

Subwindows are chosen using the Size pulldown menu in the capture application. For example, 320x240 always outputs a 320x240 subwindow. How much of the original image is shown depends on the decimation mode. A decimation of x4, for example, means that the 320x240 subimage covers almost the entire original image. With a fixed subwindow size, you can think of subsampling as electronic zoom.

6.6 Electronic Pan and Tilt

Since a subwindow doesn't occupy the whole image, it can be placed at different positions within the image. The subwindow position can be set by user commands, effectively creating an electronic pan/tilt feature as the subwindow is moved.

The placement of the subwindow is controlled by specifying the location of its upper left corner, as an X and Y offset in pixels. Figure 6-1 shows the location of the subwindow offset slider controls in the *Video Parameters* dialog.

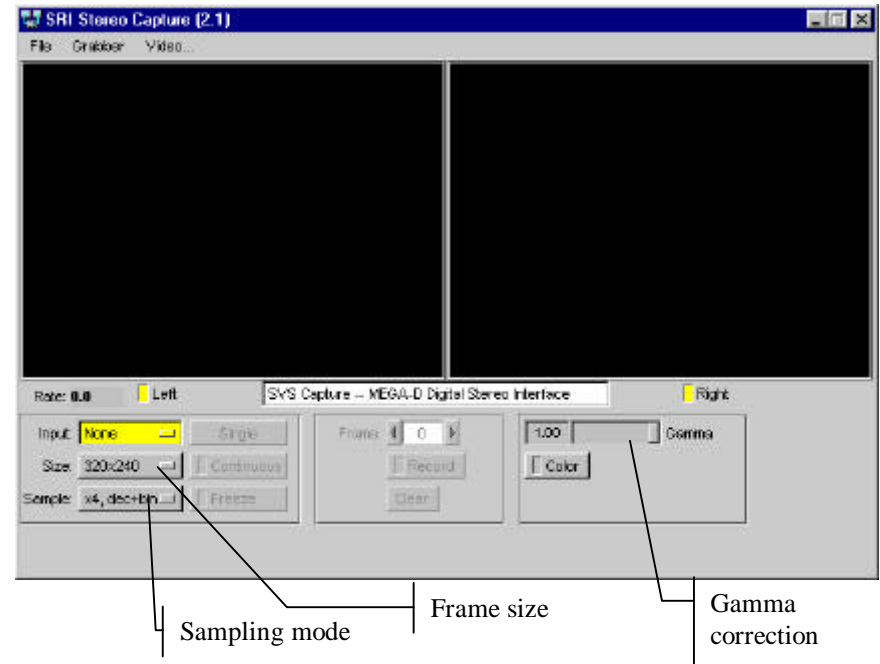


Figure 6-2 Frame size and Subsampling controls in the main capture window.

6.7 Electronic Vergence

Your eyes *verge* when looking at close objects, that is, they point inwards from a parallel view. Vergence is important when viewing close objects, because it allows the object to be centered in each image.

The STH-MD1/-C supports electronic vergence, which simulates mechanical vergence. In electronic vergence, the horizontal offset of the left subwindow differs from that of the right. This differential offset effectively causes the imagers to point inwards towards the close object.

The vergence control is on the *Video Parameters* dialog (Figure 6-1).

6.8 Frame Rates

Frame rates from the STH-MD1/-C depend on two factors: decimation and the number of image lines in a subwindow. It does not depend on the length of a line, since the CMOS imagers always use the same time to output a line, no matter how many pixels it contains.

Table 6-1 shows the frame rates for maximum frame sizes in each of the decimation modes. To calculate an actual frame rate, divide the frame rate by the fraction of lines in the actual subwindow. For example, at decimation x2, a subwindow of size N x 240 would have a frame rate of 53 fps (26 / (240/512)).

Decimation	Frames per Second
x1 (1288 x 1032)	7.5
x2 (644 x 512)	25
x4 (322 x 256)	80

Table 6-1 Frame rates at different decimations.

7 Installing the 1394 Host Card and Capture Software

The STH-MD1/-C connects to a host computer via a digital 1394 interface. The host PC must have a 1394 port, and software to interface to the video stream from the camera. This interface software presents the video stream from the 1394 hardware as a set of stereo frames to the user program (see Figure 7-1). The STH-MD1/-C comes with interface software for either MS Windows 98/2000/XP or Linux.

7.1 1394 Hardware and Drivers

Before installing the software interface, the PC must be equipped with a 1394 port. If there is one already present, on the motherboard, then you can skip this section. Otherwise you have to install a PCI or PCMCIA card. The card must be OHCI compliant, which all current cards are.

7.1.1 MS Windows Hardware Installation

MS Windows 98SE, ME, 2000, or XP is required.

For a PCI card, insert the card into a free PCI slot with the computer power off, and start the computer. With a PCMCIA card, insert it into the PCMCIA slot. In either case, the New Hardware wizard will walk you through installation steps for the low-level drivers. You may need your MS Windows 98/2000 CD to install some files.

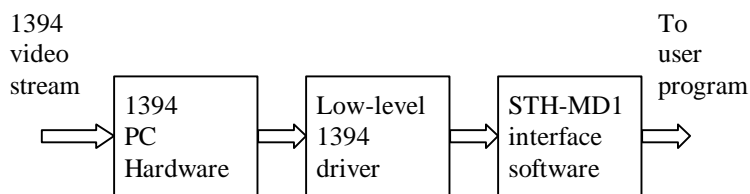


Figure 7-1 Host PC low-level software structure.

7.1.2 Linux Hardware and Driver Installation

Linux kernels 2.4.x are required for operation. Please see the Videre Design website (www.videredesign.com/support_svslnx.htm) for current information.

Sometimes the 1394 system will get hung and you have to unhang it by removing all the modules, and re-installing them. Also, the Linux IEEE 1394 drivers sometimes do not configure the root node of the bus properly. Check the listing of /proc/ohci1394 to see if the word “root” appears near the top of the listing. If not, you can sometimes get around this problem by using:

```
modprobe ohci1394 attempt_root=1
```

when installing the OHCI 1394 module.

7.2 STH-MD1 Software

The STH-MD1/-C comes with interface software and several sample applications, including the capture application described in this manual.

To install the software under MS Windows, execute the file svscap21X.exe. The installation process will add the relevant interface and application software.

To install the software under Linux, untar the file svscap21X.tgz in a new directory, which will become the top-level directory of the software. You should also set the environment variable SVSDIR to this directory, and add bin/ to your LD_LIBRARY_PATH variable.

The directory structure for the software is:

```
bin/
  smallvcap(.exe)
  smallv(.exe)
  smallvcal(.exe)
  stcap(.exe)
  stdisp(.exe)
  svsggrab.dll/lib
```

```

    libsvscap.so
    pixcap.so
    svspix.dll/lib
    stereo calculation libraries
src/
    flwin.cpp
    sv.s.h
    flwin.h
samples/
    stcap.cpp
    stdisp.cpp
    *.dsw, *.dsp, makefile

```

There are several applications. The source code for all applications is included in the distribution. The stereo calculation libraries are also included, so that user applications can link to them. The calibration libraries are not included; the only way to run the SVS calibration procedures is through the `smallvcal(.exe)` application.

`smallvcap(.exe)` is a GUI-based application that allows the user to exercise the capture functions of the STH-MD1/-C. It is described in earlier sections of this document.

`smallv(.exe)` is similar to `smallvcap`, with the addition of SRI's stereo calculation libraries for realtime depth analysis. You must have installed the full SVS system to run this application.

`smallvcal(.exe)` is the same as `smallv`, with the addition of a calibration package for calibrating a stereo rig. Use this application to perform calibration on your stereo system.

`stcap(.exe)` is a simple application that connects to the stereo head and displays images. It can serve as a template for user programs that integrate stereo capture from the STH-MD1/-C.

`stdisp(.exe)` is a simple application that connects to the stereo head, grabs images and performs stereo analysis, and displays the results. You must have installed the full SVS system to run this application. It can

serve as a template for user programs that integrate stereo capture from the STH-MD1/-C.

`libsvscap.so` and `svsgrab.lib/dll` are the capture libraries for Linux and MS Windows, respectively. These libraries must be set to the correct ones for the MEGA-D. Copy the following files in the `bin/` directory:

```

    pixcap.so -> libsvscap.so   (Linux)
    svspix.dll -> svsgrab.dll   (MS Windows)
    svspix.lib -> svsgrab.lib   (MS Windows)

```

There is a convenience program for MS Windows, `setup_megad.bat`, which will perform the copies when double-clicked.

You can check that the correct interface library is installed, by looking at the information text when the capture application is started. It should say "MEGA-D digital stereo interface". If not, the wrong interface library is installed in `svsgrab.dll` or `libsvscap.so`.

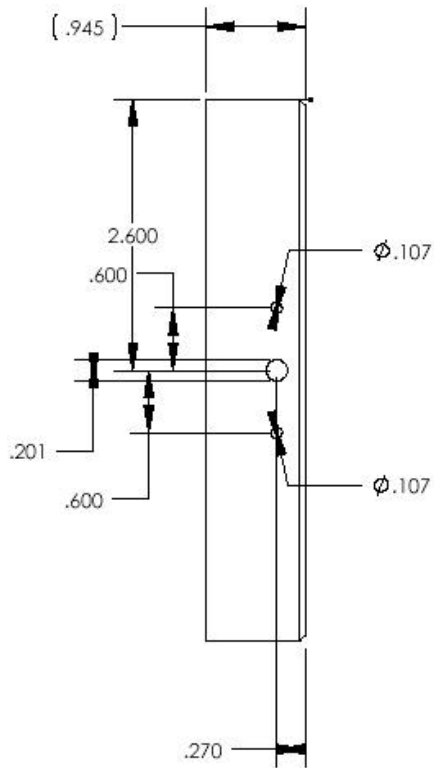
8 Interface Software API

Please see the Small Vision System manual for information about the software API for capturing and saving images.

9 Mounting Diagrams

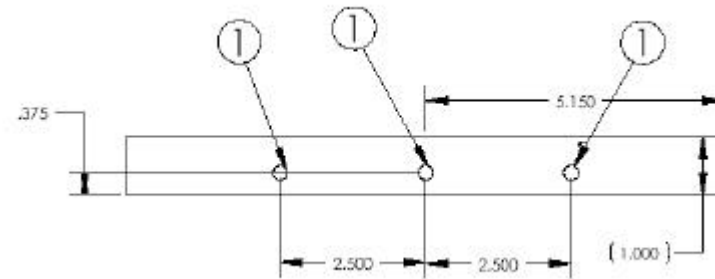
9.1 Bottom Mounting Diagram for the STH-MD1/-C.

The larger hole is threaded for a 1/4-20 machine screw (standard tripod mounting screw). The two smaller holes are threaded for 6-32 machine screws.



9.2 Bottom Mounting Diagram for the STH-MD1/-C-Wide (Rev B)

The three holes are threaded for 1/4-20 machine screws (standard tripod mounting screw).



10 Technical Specifications

10.1 Geometry

- Housing
 - Rigid milled Delrin frame
- Baseline
 - 9 cm, fixed
- Imager size
 - 2/3 inch diagonal
- Lens type
 - C mount, interchangeable

10.2 Interface

- Type
 - Digital 1394 [Firewire], OHCI compliant
- Speed
 - Maximum 20 megapixels / second
- Host interface
 - Any 1394 OHCI card
- Host OS
 - Windows 98 / 2000, Linux

10.3 Imagers

- Type
 - Zoran PCS2112 CMOS

- Format
 - Monochrome, 8 bits / pixel
 - Color, 8 bits / pixel, Bayer pattern
- Scan mode
 - Progressive
- Pixel size
 - 7.5 um square
- Sensitivity
 - 1 lux
- Exposure
 - Electronic, 0.1 ms to frame time
- Gain
 - 6 to 20 dB
- Resolution
 - 1288 H x 1032 V
- Decimation
 - x1, x2, and x4
- Subwindow
 - Arbitrary rectangular subwindow

10.4 Full-frame rates

- No decimation
 - 1280 x 1032: 7 Hz
- Decimate by 2
 - 640 x 512: 25 Hz
- Decimate by 4
 - 320 x 256: 80 Hz

[Subwindowed frames are proportionally faster, e.g., N x 640 images at no decimation are 15 Hz]

10.5 Physical

Power

2 watts

Cabling

Single 6-pin 1394 cable (power and signal)

Stereo module size

5" x 1.75" x 1"

1394 module size

3.5" x 2.5" x 0.75"

Weight (without lenses)

6 ounces

11 Technical Support

For technical support, please contact Videre Design by email or FAX.

Videre Design
P.O. Box 585
Menlo Park, CA 94026-0585
Fax: (650)323-3646
Email: support@videredesign.com

Technical information about stereo algorithms and stereo calibration can be found at www.ai.sri.com/~konolige/svs.